

# Could Animal Production Become a Profession?

---

David Fraser  
Animal Welfare Program  
University of British Columbia





## Good Practice Note

# Creating Business Opportunity through Improved Animal Welfare

Animal welfare is increasingly seen as an important element of commercial livestock operations around the world. This has significant implications for an industry with extremely deep and complex historical and cultural roots. Due to the scale and reach of the issue, it is being addressed by a number of people and organizations and on a number of levels. These range from individuals responsible for caring for animals on farms, to large-scale commercial enterprises providing animal-based products from different livestock systems. In response, a growing number of regional and global initiatives are emerging to provide guidance on acceptable practices.

Many corporate groups, from producers to retailers, are also acknowledging social and environmental responsibilities and pursuing programmes designed to enhance animal welfare.

- costs savings due to more efficient production processes that enhance animal welfare
- realising growing market opportunities for food produced in animal welfare friendly systems
- becoming the producer of choice for retailers and consumers concerned with animal health and welfare, food safety and quality, human health and the environment

IFC is determined to work with and support its clients in the reduction of losses, the potential increase of productivity and/or the accessing of new markets through the application of sustainability principles, including animal welfare standards. This Good Practice Note is part of an IFC initiative to provide enhanced support to its clients in the development of a responsible and forward-looking approach to livestock operations to, among other things, help producers to access and maintain entry into high quality and value market segments. It

Environment and Social Development Department



### What's Inside?

- 1 What Animal Welfare is and How it is Addressed
- X How Improvements in Animal Welfare Affect Productivity
- X Meeting Society's Expectations
- X How Can Improvements in Animal Welfare Be Made?
- X Why is IFC Concerned with Animal Welfare?
- X How will IFC Address Animal Welfare?
- X IFC's Commitment

## Good Practice Note

# Creating Business Opportunity through Improved Animal Welfare

Animal welfare is increasingly seen as an important element of commercial livestock operations around the world. This has significant implications for an industry with extremely deep and complex historical and cultural roots. Due to the scale and reach of the issue, it is being addressed by a number of people and organizations and on a number of levels. These range from individuals responsible for caring for animals on farms, to large-scale commercial enterprises providing animal-based products from different livestock systems. In response, a growing number of regional and global initiatives are emerging to provide guidance on acceptable practices.

Many corporate groups, from producers to retailers, are also acknowledging social and environmental responsibilities and pursuing programmes designed to enhance animal welfare.

- costs savings due to more efficient production processes that enhance animal welfare
- realising growing market opportunities for food produced in animal welfare friendly systems
- becoming the producer of choice for retailers and consumers concerned with animal health and welfare, food safety and quality, human health and the environment

IFC is determined to work with and support its clients in the reduction of losses, the potential increase of productivity and/or the accessing of new markets through the application of sustainability principles, including animal welfare standards. This Good Practice Note is part of an IFC initiative to provide enhanced support to its clients in the development of a responsible and forward-looking approach to livestock operations to, among other things, help producers to access and maintain entry into high quality and value market segments. It

Environment and Social Development Department



### What's Inside?

- |   |  |
|---|--|
| 1 | What Animal Welfare is and How it is Addressed         |
| X | How Improvements in Animal Welfare Affect Productivity |
| X | Meeting Society's Expectations                         |
| X | How Can Improvements in Animal Welfare Be Made?        |
| X | Why is IFC Concerned with Animal Welfare?              |
| X | How will IFC Address Animal Welfare?                   |
| X | IFC's Commitment                                       |





## Capacity building to implement good animal welfare practices

FAO Expert Meeting

FAO Headquarters (Rome) • 30 September – 3 October 2008

## Topics

1. A historic debate
2. The intensification of animal production
3. Are the existing responses working?
4. "Professional animal production"

## 1. A historic debate



## Agrarian



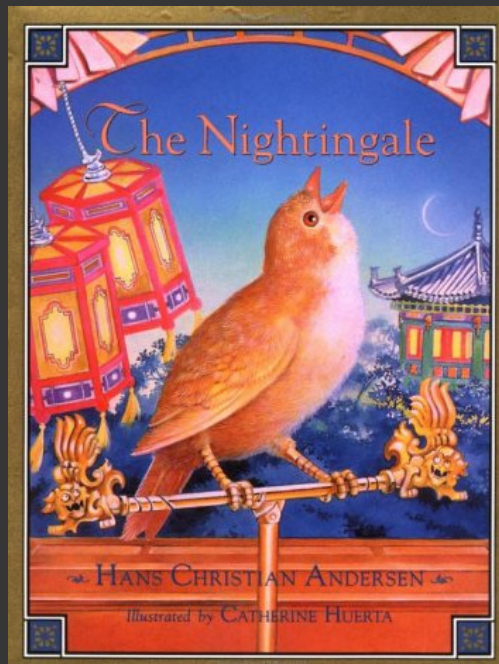
The best common people are the agricultural population, so that it is possible to introduce democracy as well as other forms of constitution where the multitude lives by agriculture or by pasturing cattle.

Aristotle, "Politics"

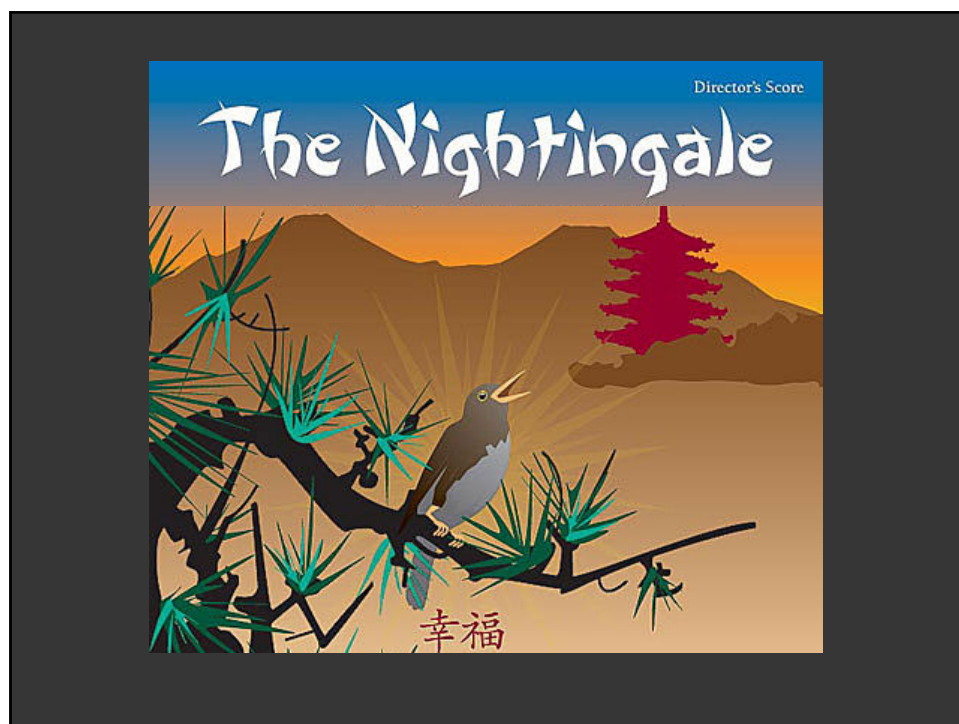
## Romantic



Landscape, Albert Bierstadt c. 1868

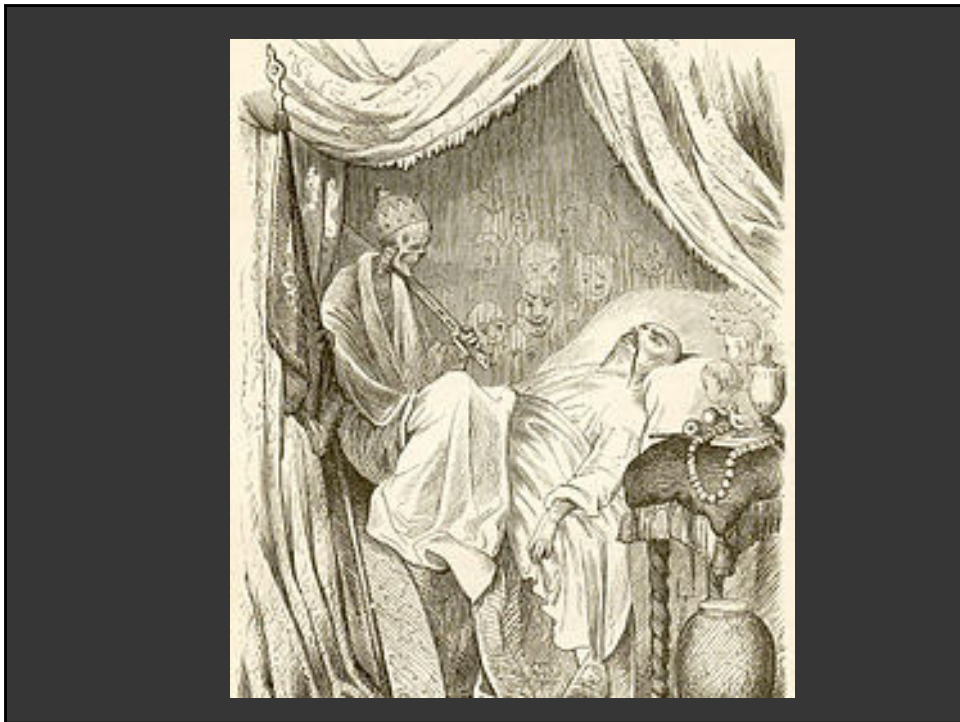














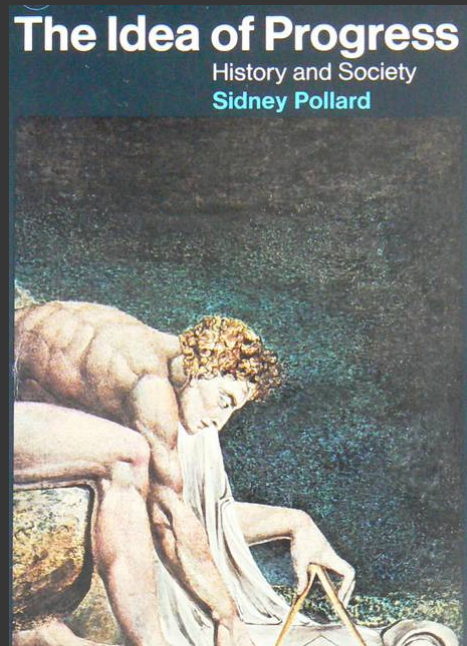
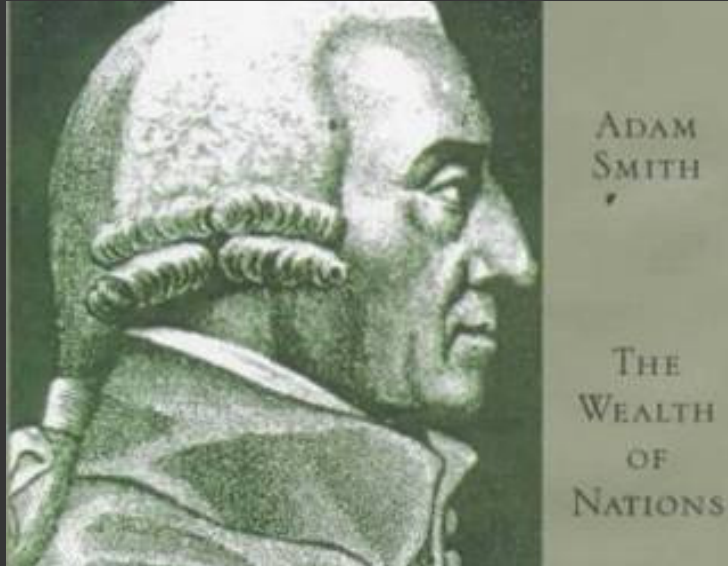
## World-views

### Romantic/Agrarian

- simple, basic life
- nature as an ideal
- emotion
- freedom of individual
- Golden Age in the past



# Productivity



"... progress in wealth, in civilization, in social organization, in art and literature, even in human nature ...".

Sydney Pollard 1968

*The Idea of Progress*

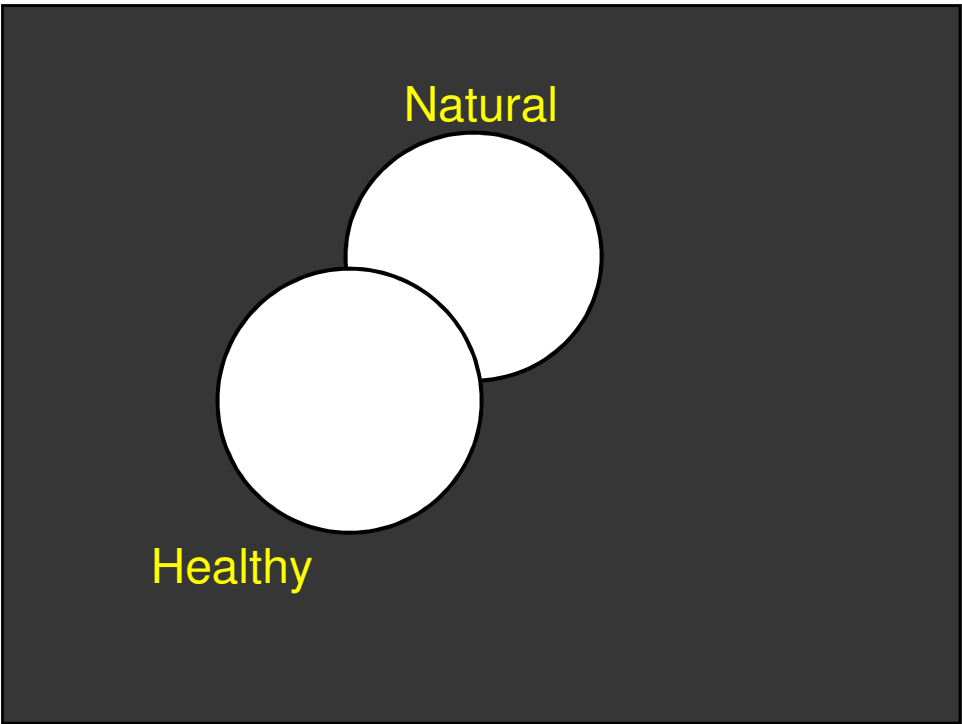
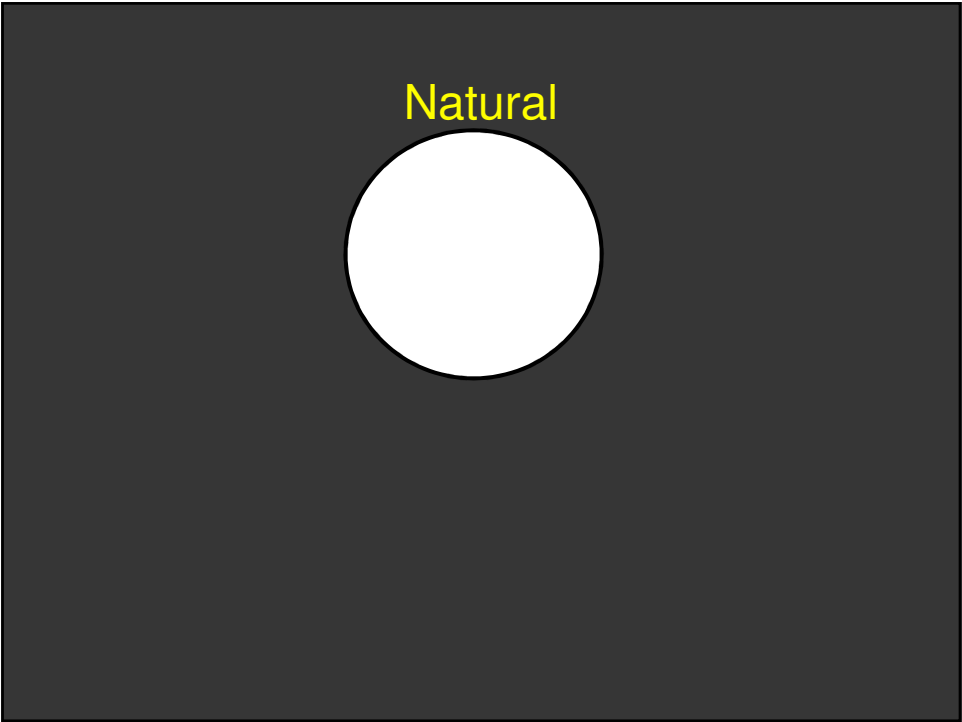
### World-views

#### Romantic/Agrarian

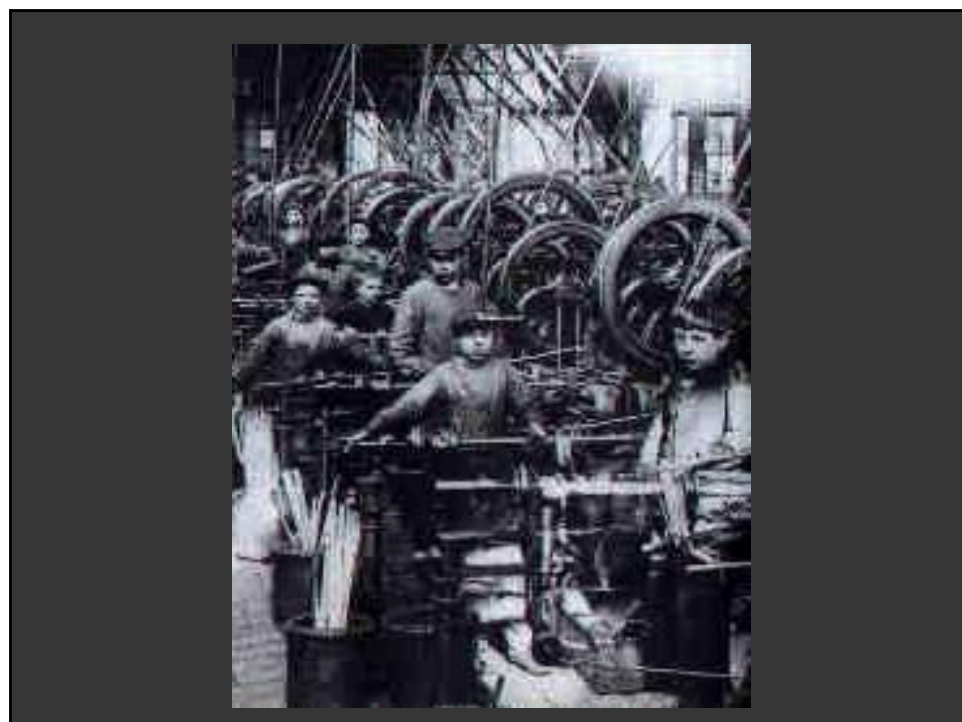
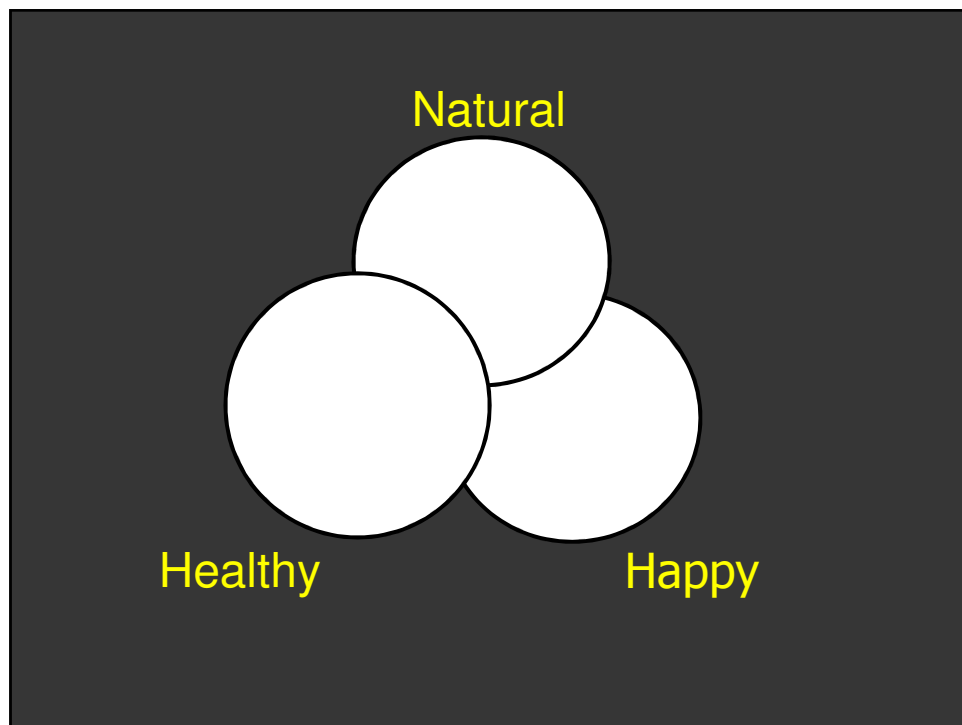
- simple, basic life
- nature as an ideal
- emotion
- freedom of individual
- Golden Age in the past

#### Pro-Industrial

- life improved by science/technology
- nature as imperfect
- rationality
- productivity of enterprise
- Golden Age in the future







“Drowsy and exhausted, the poor creatures fall too often among the machinery, which is not in many instances sufficiently sheathed, when their muscles are lacerated, their bones broken, or their limbs torn off.”

Bizup 2003. *Manufacturing Culture: Vindications of Early Victorian Industry*.

## The “Factory Acts”

## The "Factory Acts"

- 1802 Ventilation and cleaning
- 1844 Machinery to be fenced
- 1901 Protection from dust and fumes
- 1901 7 metres<sup>3</sup> per person

## The "Factory Acts"

- 1819 12-h day for children 9-16
- 1833 9-h day for children <13
- 1847 10-h day for women
- 1878 No children <10 years

## 2. The intensification of animal production



### "Intensification"

- consolidation of ownership
- automation & cost-cutting
- confinement

## Factors encouraging intensification

- policy
- availability of labour
- animal production technology

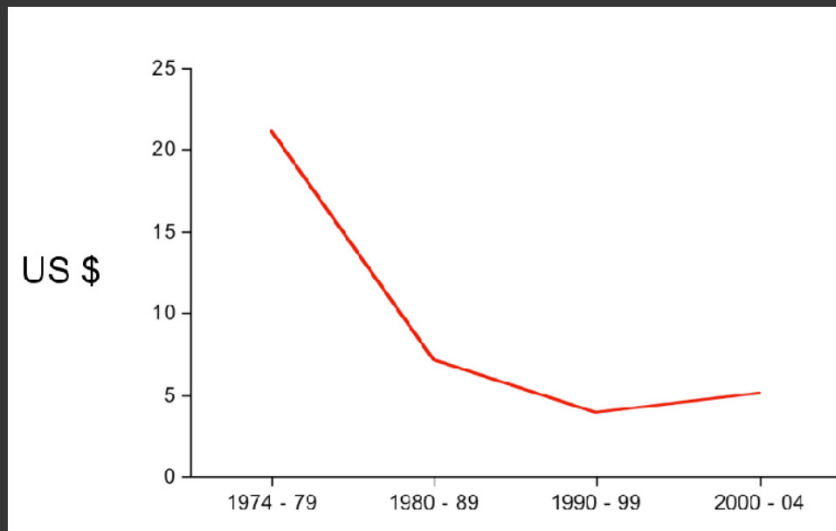








Profit per animal sold, US farrow-to-finish pig farms



Data from Dr. John Lawrence

## “Intensification”

- consolidation of ownership
- automation & cost-cutting
- confinement

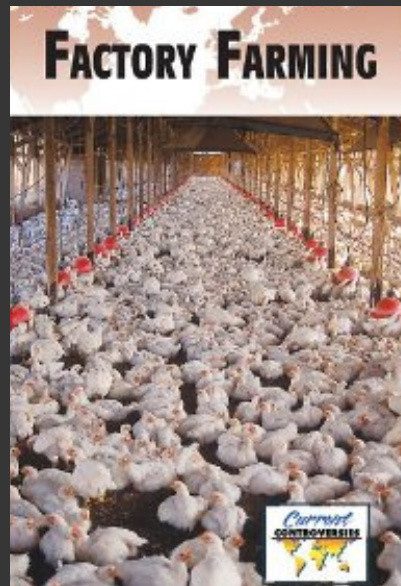
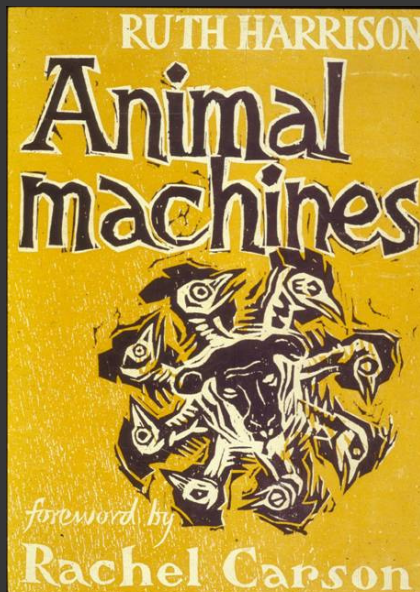


Photo: International Livestock Research Institute

Intensification = Modernization

Intensification = Modernization

Intensification = Industrialization



"Replacing ... family farms are enormous factory farms owned by huge conglomerates."

Mark Bernstein, 2004. *Without a Tear*

"In the past half century, animal agriculture in the U.S. has been taken over by corporations, turning family farms into factory farms."

Farm Sanctuary, 2009.

## "A Factory Act for animals"

## "A Factory Act for animals"

1988	UK hens: 450 cm <sup>2</sup> /hen, 40 cm high
2003	EU: 550 cm <sup>2</sup> /hen
2012	EU: 750 cm <sup>2</sup> /hen, perch, nest, litter

### "A Factory Act for animals"

1988	UK hens: 450 cm <sup>2</sup> /hen, 40 cm high
2003	EU: 550 cm <sup>2</sup> /hen
2012	EU: 750 cm <sup>2</sup> /hen, perch, nest, litter
2010	EU: ammonia <20, CO <sub>2</sub> <3000 ppm

### "A Factory Act for animals"

1988	UK hens: 450 cm <sup>2</sup> /hen, 40 cm high
2003	EU: 550 cm <sup>2</sup> /hen
2012	EU: 750 cm <sup>2</sup> /hen, perch, nest, litter
2010	EU: ammonia <20, CO <sub>2</sub> <3000 ppm
2013	EU: sows in crates only 4 weeks

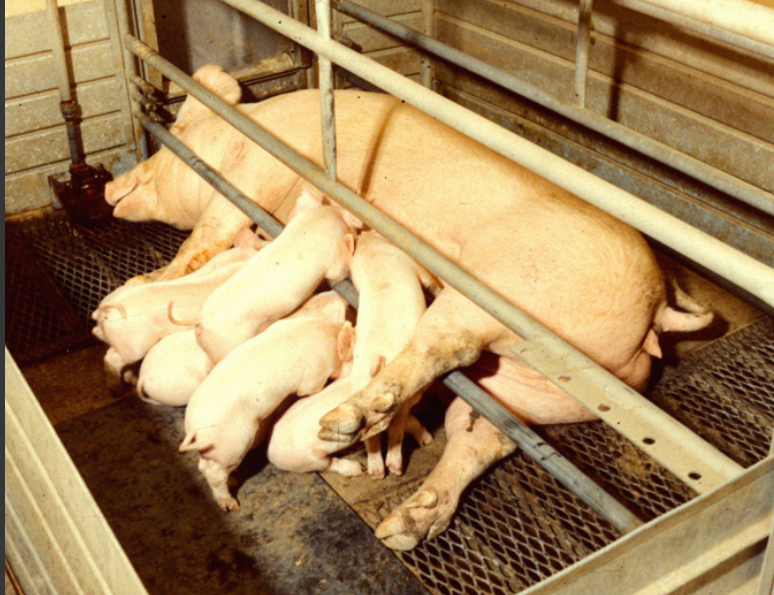


3. Are these measures working to safeguard animal welfare?



Photo: Lawrance Consulting and Trading

## Piglet deaths



## Piglet deaths

39 farms	Piglet deaths	5-24%	Andersen et al. 2007

## Piglet deaths

39 farms	Piglet deaths	5-24%	Andersen et al. 2007
30 farms	Piglet deaths	10-32%	Friendship et al. 1986

## Piglet deaths

39 farms	Piglet deaths	5-24%	Andersen et al. 2007
30 farms	Piglet deaths	10-32%	Friendship et al. 1986
83 organic farms	Piglet deaths	0-50%	Sundrum 2011

## Bursitis in growing pigs



Photo: NADIS

## Bursitis in growing pigs

30 farms, concrete floors	Bursitis	7-83%	Temple et al. 2011
	Severe bursitis	0-23%	

## Sow mortality



Photo: FAO

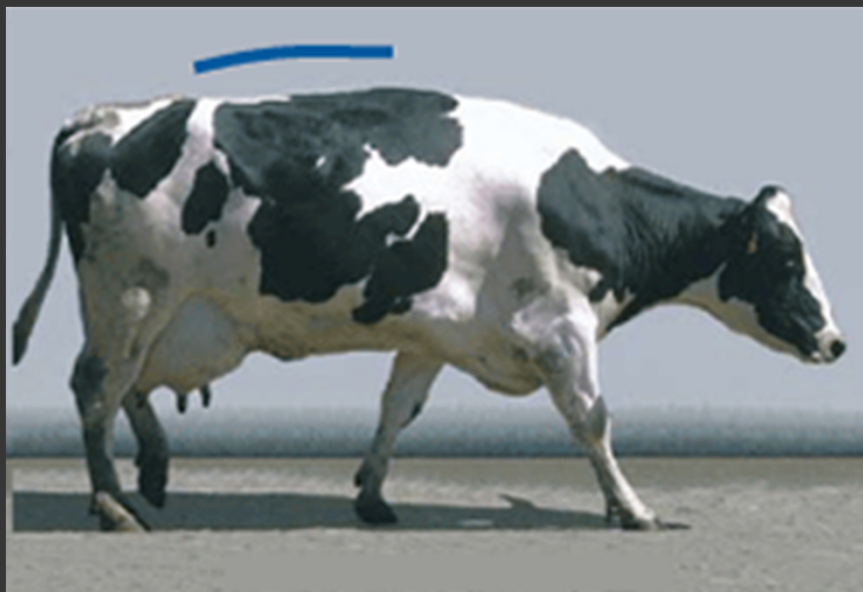
## Sow mortality

102 farms, stalls or tethers	Annual death rate	0-20%	Abiven et al. 1998
---------------------------------	----------------------	-------	-----------------------



Photo: BC Ministry of Agriculture

## Dairy cow lameness





## Dairy cow lameness

121 farms	Lame	5-85%	von Keyserlingk et al. 2012

## Dairy cow lameness

121 farms	Lame	5-85%	von Keyserlingk et al. 2012
50 farms	Severely lame	3-57%	Espejo et al. 2006

## Dairy cow lameness

121 farms	Lame	5-85%	von Keyserlingk et al. 2012
50 farms	Severely lame	3-57%	Espejo et al. 2006
205 farms	Lame & severely lame	0-79%	Barker et al. 2010



- Deaths
- Lameness
- Leg lesions
- Foot lesions

## Broiler chickens

114 flocks	Deaths	1.4-14%	Dawkins et al. 2004
	Lame	0-90%	
	Leg lesions	0-80%	
	Foot lesions	0-88%	

## Broiler chickens

114 flocks	Deaths	1.4-14%	Dawkins et al. 2004
	Lame	0-90%	
	Leg lesions	0-80%	
	Foot lesions	0-88%	
206 flocks	Moderate/severe foot lesions	0-72%	Haslam et al. 2007

## Broiler chickens

114 flocks	Deaths	1.4-14%	Dawkins et al. 2004
	Lame	0-90%	
	Leg lesions	0-80%	
	Foot lesions	0-88%	
206 flocks	Moderate/severe foot lesions	0-72%	Haslam et al. 2007
176 flocks	Lame	0-84%	Knowles et al. 2008



Very different welfare outcomes occur in the same type of physical environment.



- Warm, draft-free
- Timely fostering
- Assisting weak piglets
- Assisting sows in long parturition
- Hygiene



- Maintenance of bedding
- Hygiene
- Nutrition
- Animal handling



## Animal welfare

Physical environment

## Animal welfare

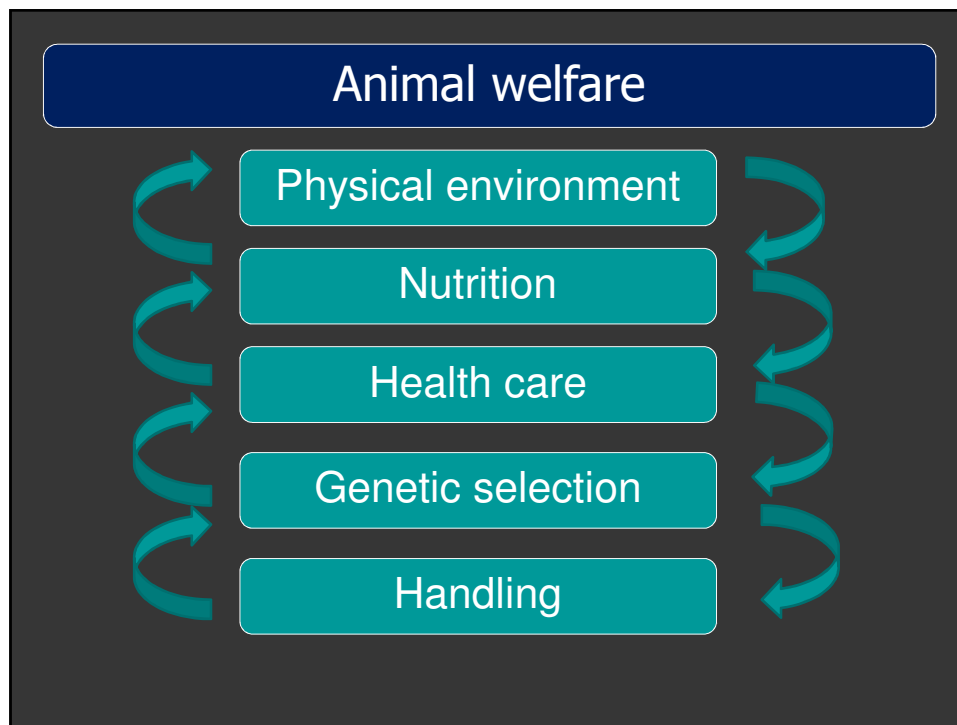
Physical environment

Nutrition

Health care

Genetic selection

Handling



Intensification  $\neq$  industrialization

#### 4. “Professional animal production”

##### Animal production

- Agrarian
- Industrial

## Animal production

- Agrarian
- Industrial
- Professional



Florence Nightingale 1820-1910

	PROFESSIONS	
Main outcome is:	Service	
Participation requires:	Competence (demonstrated to peers)	
Ethical acceptability from:	Adhering to ethical norms (self-regulation)	

	PROFESSIONS	INDUSTRIES
Main outcome is:	Service	Products for sale
Participation requires:	Competence (demonstrated to peers)	Market success
Ethical acceptability from:	Adhering to ethical norms (self-regulation)	Obeying regulations

Animal production:

- service?

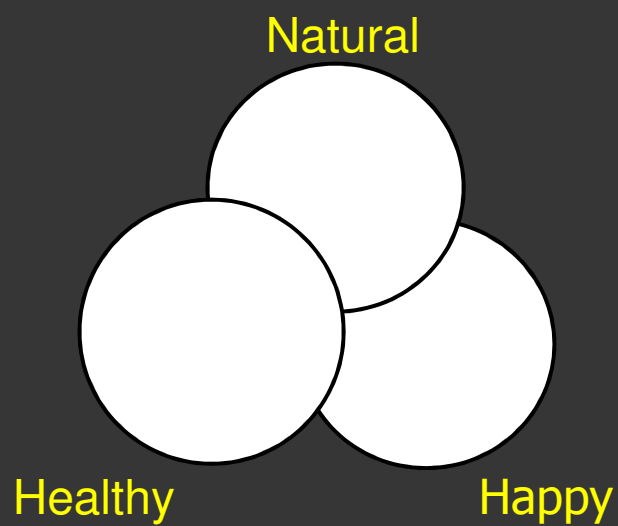
Animal production:

- service?
- competence?



Animal production:

- service?
- competence?
- adherence to ethical norms?



### Animal production:

- service
- competence
- adherence to ethical norms

## 5. Conclusions

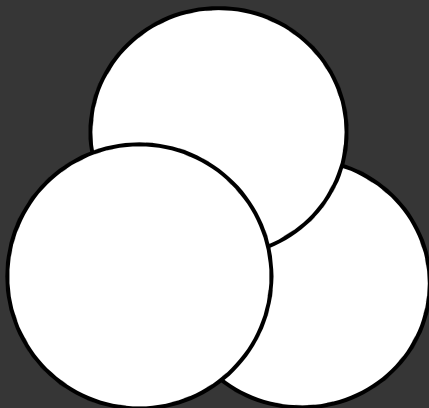


Romantic/Agrarian:

- nature
- emotion
- rural life

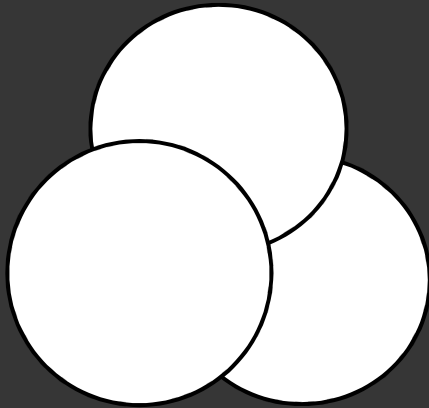
Industrial:

- technology
- productivity
- “progress”

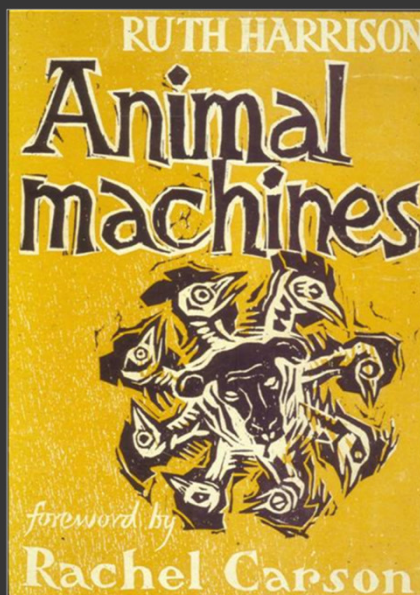


Different views of animal welfare:

- a “natural” life
- a healthy, productive life
- a happy life: comfort, contentment, pain control



Because these views of animal welfare are deeply embedded in our culture, standards and practices need to strike a balance among the three.



Intensification is widely perceived as Industrialization

Concerns:

- loss of rural life
- welfare (of animals)



Animal welfare reforms have been modeled on worker welfare legislation that regulated the physical environment and exposure time in factories.



But in animal production, the same type of environment can produce very different animal welfare outcomes...

. How to ensure a high quality of animal care in intensive systems is the next challenge in farm animal welfare.

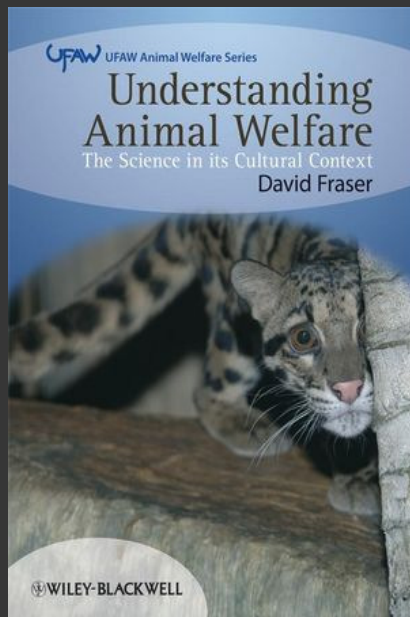


because animal welfare is greatly affected by the quality of animal care.



Shifting animal production toward a professional model is a more promising approach to improving animal welfare and maintaining public trust in animal producers.





#### Further information:

Fraser, D. 2008. Understanding Animal Welfare. Wiley-Blackwell.

Fraser, D. 2014. Could animal production become a profession? Livestock Science 169: 155–162.

## Leg lesions



Healthy



Present



Severe

## Leg lesions

121 farms	Leg lesions	0-100%	von Keyserlingk et al. 2012
-----------	-------------	--------	--------------------------------